



Electric motor construction in Grünhain since 1951



Whether it's a fan, circular saw, compressor, machine tool or pump - they all have one thing in common: a motor as a drive. And many of these motors have their origins in Grünhain, a small town in the Erzgebirge district near Schwarzenberg. Since its foundation in 1951, Elektromotorenwerk Grünhain, or EMGR for short, has been a byword for reliability and quality. Over 70 years of experience in electric motor construction, state-of-the-art technology and qualified and committed employees are a guarantee for outstanding products.

In the process, Grünhainer Elektromotorenwerk has established itself as a supplier of universal drives for consumer goods, trade, commerce and industry. In addition to the core business of three-phase and single-phase AC motors in the power range from 0.06 to 4.0 kW, which make up the majority of motor production, flat, built-in and pot motors as well as open device motors are manufactured in Grünhain.

The majority of our orders are not standard products, but customer-specific developments, adapted to the design of the respective application. Thus, desired additional options such as integrated brakes, switch or plug combinations or the additional installation of frequency converters are easily possible.

In this way, we always guarantee our customers tailor-made solutions and the highest level of satisfaction.



Elektromotorenwerk Grünhain GmbH

Bahnhofstraße 12
08344 Grünhain-Beierfeld | Germany

Phone +49 (0) 3774 52-200
Fax +49 (0) 3774 52-215

E-Mail info@emgr.de
Homepage www.emgr.com



Product overview

Innovative customised drive solutions

- ✓ Energy-saving motors according to IE2 | IE3 | IE4
- ✓ Electric motors with frequency converters
- ✓ Component production
- ✓ Die-cast aluminium
- ✓ ERZMO® MS 2.0

Made in Germany



A company of the  **DEUTSCHE
ELEKTROMOTOREN
HOLDING**

Customised drive solutions



Single-phase
AC motors
0,06 - 2,2 kW



Three-phase
motors (IE2/IE3)
0,06 - 4,0 kW



Frequency inverter
controlled drives
bis 4,0 kW



Pot motors
**0,75 - 4,0 kW
(S3-25%)**



Low profile
motors
0,55 - 3,8 kW



Open
Unit motors
0,37 - 3,0 kW



Permanent magnet
synchronous motors
(IE4)
0,37 - 3,0 kW



Built-in motors
0,05 - 7,5 kW



Customised
drives
**Special electrical &
mechanical designs**

Spare parts service

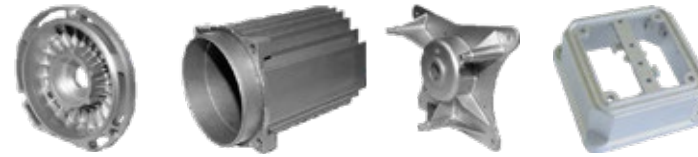
Only for EMGR's in-house motors

- ▶ Bearing shields (aluminium - die-cast parts)
- ▶ Collar screws
- ▶ Electronic starters
- ▶ Capacitors
- ▶ Terminal boxes
- ▶ Mounting for capacitors
- ▶ Fans, covers, shaft sealing rings, terminal sockets
- ▶ Feet, brakes, saw bladeflansche and much more



Die-cast parts

Electric motor parts



- ▶ Motor housing
- ▶ Bearing shields
- ▶ Terminal boxes
- ▶ etc.

Industrial parts



Parts for use under special conditions conditions such as increased temperature or corrosion resistance with unit weights up to approx. 5 kg made of the alloys Al Si9 Cu3, Al Si12 Cu1, Al Si10 Mg, as well as pure aluminium AL 99.9

Automotive parts



- ▶ Aluminium die-cast parts with/without Casting-in parts made of metal

ERZMO[®] MS 2.0

The pedelec drive for cargo driving applications

- ▶ 36 V, 48 V battery voltage
- ▶ 3 gear shift integrated
- ▶ Meets pedelec standard DIN EN 15194
- ▶ Powerful mid-mounted motor
- ▶ Specially developed for cargo drives
- ▶ High torque allows loads up to 300kg to be moved easily
- ▶ Powerful electronics take over control, also implemented in the housing

